

# inReach Support Center

Portal > Knowledgebase > Explore Web Portal [explore.delorme.com] > Sync > How-To > Syncing inReach SE+ / Explorer+ with Explore Portal

---

## Syncing inReach SE+ / Explorer+ with Explore Portal

Lu Parente - 2017-03-06 - 0 Comments - in How-To

Using inReach Sync

After adding or editing Contacts, QuickText, or Preset Messages on your Explore account you will need to sync the Explore account with your inReach device to ensure your information is up to date on the device. When you sync your devices with the Explore site, the information you entered online — like Contacts, QuickText or Preset Messages, and Facebook, Twitter, or MapShare information — will be loaded on to your devices.

The inReach Sync app is a program that can only be installed to a Windows or Mac computer. The inReach Sync app cannot be installed or used on an Android or iOS phone or tablet.

**IMPORTANT:** The inReach Sync app is also used to update the firmware on the suite of inReach devices. Use the instructions below to update the firmware on an inReach in need of a firmware update.

This article explains how to sync your inReach+ with the Explore Portal.

1. Log in to your account at [inreach.garmin.com](http://inreach.garmin.com).
2. On the Contacts, Messages, or Social tabs make edits to the Contacts, QuickText or Preset Messages, and Social Media connections for the inReach account.
3. Select the Sync tab when ready.



4. Select the Launch inReach Sync button.

## INREACH SE and EXPLORER



Sync your contacts, waypoints, routes, and other data, as well as install updates.

### First time syncing?

Download inReach Sync

[\(Installation help\)](#)

Launch inReach Sync

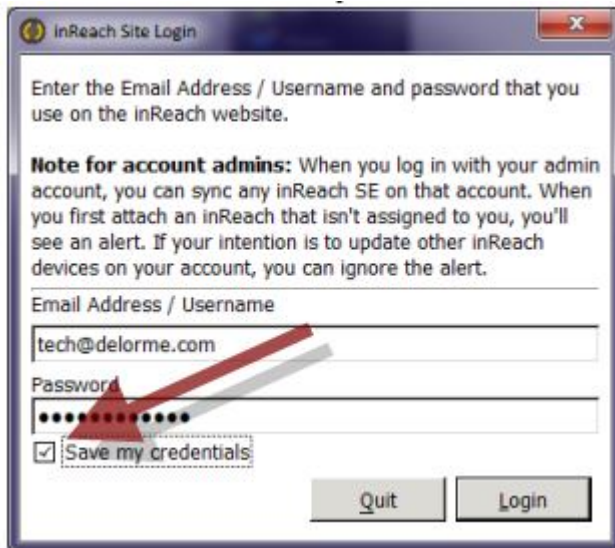
Note: If your web browser requests authorization to open the inReach Sync application select Allow.



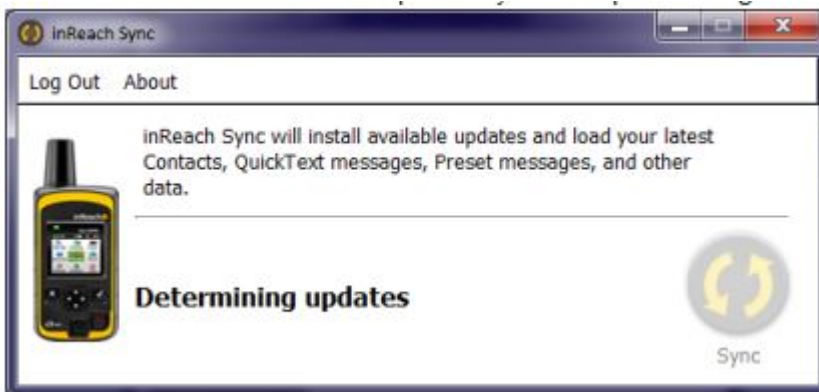
5. Enter your [inreach.garmin.com](http://inreach.garmin.com) username and password in the inReach Site Login window and select Login.



Note: Enable the Save my credentials checkbox to skip this step in the future.

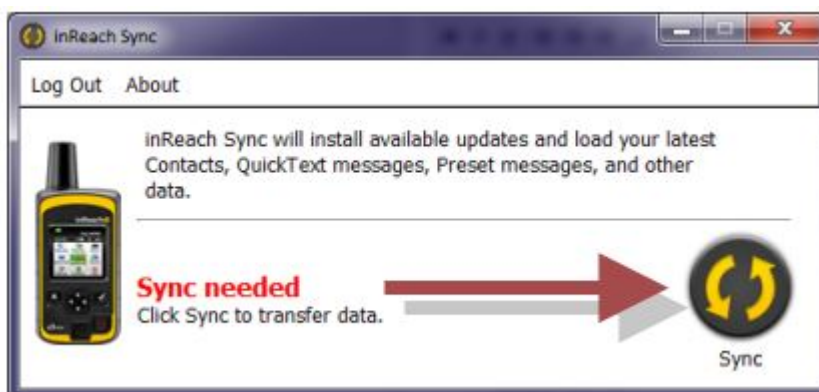


6. Connect the inReach to a USB port on your computer using the provided USB-mirco to USB cable.



7. Select the Sync button to sync your inReach. The inReach Sync app will push the Contacts, QuickText, Preset Messages, and Facebook, Twitter, and MapShare information to the inReach.

Note: If a new firmware version is needed, you will be prompted to install the latest version of firmware.



8. Your inReach is up-to-date! Close the inReach Sync app when finished.

